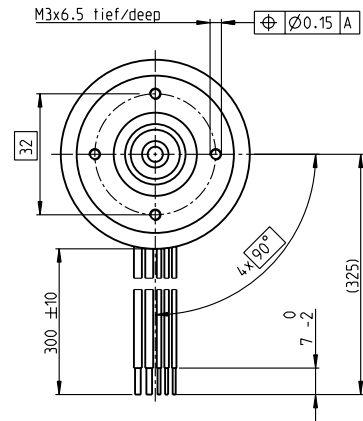
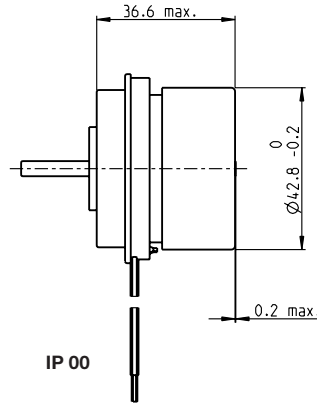
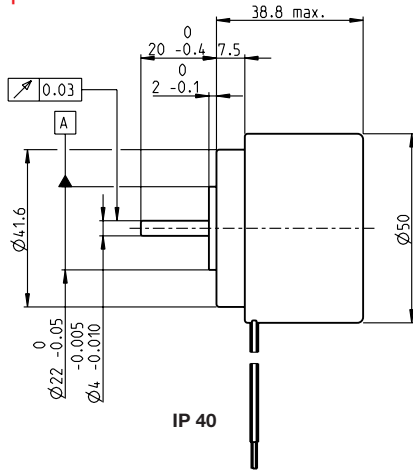


# EC 45 flat brushless, 50 Watt, with integrated electronics

1-Q-speed controller

maxon flat motor



M 1:2

- Stock program
- Standard program
- Special program (on request)

## Part Numbers

IP 40 (with cover)  
IP 00 (without cover)

	2 wire version		5 wire version		
			Enable	Direction	
IP 40 (with cover)	353526		350910	370427	
IP 00 (without cover)		353524	352887		370426

## Motor Data (provisional)

Values at nominal voltage							
1 Nominal voltage	V	24	24	24	24	24	24
2 No load speed	rpm	3000	3000	4500	4500	4500	4500
3 No load current	mA	114	114	192	192	192	192
4 Nominal speed	rpm	3000	3000	4500	4500	4500	4500
5 Nominal torque (max. continuous torque)	mNm	89.9	130	82.8	131	82.8	131
6 Nominal current (max. continuous current)	A	1.61	2.41	2.15	3.45	2.15	3.45
33 Max. torque	mNm	150	150	149	149	149	149
34 Max. current	A	2.83	2.83	3.86	3.86	3.86	3.86
9 Max. efficiency	%	74	74	76	76	76	76
Characteristics							
35 Type of control		Speed	Speed	Speed	Speed	Speed	Speed
36 Supply voltage +V <sub>CC</sub>	V	10...28	10...28	10...28	10...28	10...28	10...28
37 Speed set value input	V	= V <sub>CC</sub>	= V <sub>CC</sub>	0.33...10.8	0.33...10.8	0.33...10.8	0.33...10.8
38 Scale speed set value input	rpm/V	125	125	600	600	600	600
39 Speed range	rpm	1250...3500	1250...3500	200...6480	200...6480	200...6480	200...6480
40 Max. acceleration	rpm/s	3000	3000	6000	6000	6000	6000

## Specifications

- Thermal data**
- 17 Thermal resistance housing-ambient 5.1 (2.5) K/W
  - 18 Thermal resistance winding-housing 6.7 (3.3) K/W
  - 19 Thermal time constant winding 45.1 (22.1) s
  - 20 Thermal time constant motor 256 (124) s
  - 21 Ambient temperature -40...+85°C
  - 22 Max. winding temperature +125°C
  - 41 Max. temperature of electronics +105°C
- Mechanical data (preloaded ball bearings)**
- 16 Rotor inertia 181 gcm<sup>2</sup>
  - 24 Axial play at axial load < 7.0 N 0 mm
  - > 7.0 N 0.14 mm
  - 25 Radial play preloaded 6.8 N
  - 26 Max. axial load (dynamic) 95 N
  - 27 Max. force for press fits (static) (static, shaft supported) 1000 N
  - 28 Max. radial load, 5 mm from flange 63 N
- Other specifications**
- 31 Weight of motor 260 g
  - 32 Direction of rotation Clockwise (CW)

Values listed in the table are nominal.

### Protective functions

Overload protection, blockage protection, inverse-polarity protection, thermal overload protection, low/high voltage cut-off

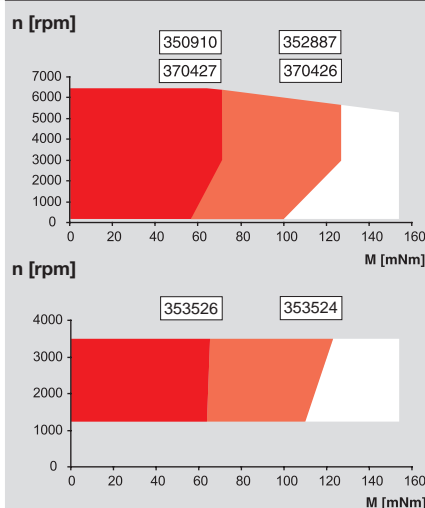
### Connection 2 wire version (Cable AWG 18)

- red +V<sub>CC</sub> 10...28 VDC
- black GND

### Connection 5 wire version (Cable AWG 18/24)

- red +V<sub>CC</sub> 10...28 VDC
- black GND
- white Speed set value input
- green Monitor n (6 pulses per revolution)
- grey Disable (Type Enable) or sense of direction (Type Direction)

## Operating Range



## Comments

- Continuous operation**  
The drive can be operated with a speed controller and, taking account of the given thermal resistance (fig. 17 and 18) at an ambient temperature of 25°C, does not exceed the maximum permissible operating temperatures.
- Overload range**  
The drive reaches these operating points. Speed may vary from the set value. The overload protection shuts down the drive in the event of sustained overload.

## maxon Modular System

Overview on page 20-27

### Planetary Gearhead

- Ø42 mm
- 3 - 15 Nm
- Page 351

### Spur Gearhead

- Ø45 mm
- 0.5 - 2.0 Nm
- Page 353

