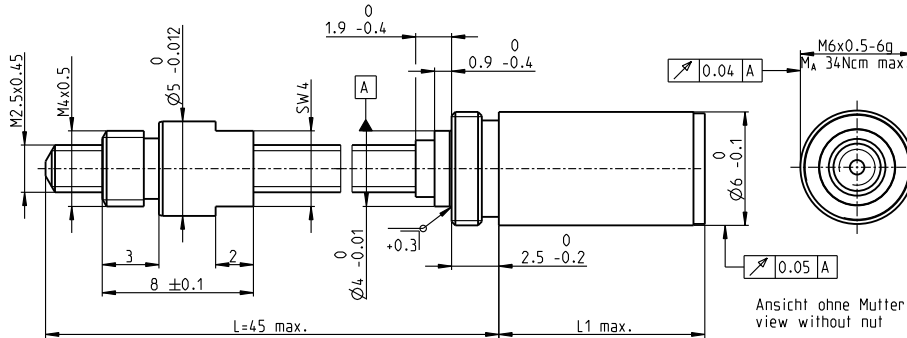


Spindle Drive GP 6 S Ø6 mm, Metric spindle

Ceramic Version



Technical Data

Spindle	M2.5 x 0.45, ceramic
Standard length	45 mm
Special length (5 mm steps)	max. 80 mm
Nut (standard)	thread nut
Material	stainless steel
Axial play	< 0.079 mm
Planetary gearhead	straight teeth
Bearing	ball bearing
Radial play, 5 mm from flange	< 0.12 mm
Axial play	preloaded
Max. continuous input speed	12000 rpm
Recommended temperature range	-15...+80°C
Max. axial load (static) ¹	10 N
Number of stages	1 2 3 4 5
Max. radial load, 5 mm from flange	5 N 5 N 5 N 5 N 5 N

M 5:2

- Stock program
- Standard program
- Special program (on request)

Part Numbers

Spindle Drive Data	Part Numbers				
	437380	437379	437378	437377	437375
1 Reduction	3.9 : 1	15 : 1	57 : 1	221 : 1	854 : 1
2 Absolute reduction	²⁷ / ₇	⁷²⁹ / ₄₉	¹⁹⁶⁸³ / ₃₄₃	⁵³¹⁴⁴¹ / ₂₄₀₁	¹⁴³⁸⁹⁰⁷ / ₁₆₈₀₇
20 Max. feed velocity ¹	mm/s 25	10	2.6	0.7	0.2
21 Max. feed force (continuous) ¹	N 2	3	5	7	11
22 Max. feed force (intermittent) ¹	N 6	10	15	15	15
4 Number of stages	1	2	3	4	5
7 Max. efficiency gearhead incl. spindle	% 39	34	30	27	23
8 Weight ¹	g 2.9	3.3	3.7	4.1	4.5
9 Average backlash no load	° 1.8	2.0	2.2	2.5	2.8
23 Mechanical positioning accuracy ¹	mm 0.081	0.082	0.082	0.082	0.083
10 Mass inertia gearhead incl. spindle ¹	gcm ² 0.001	0.001	0.001	0.001	0.001
11 Gearhead length L1	mm 6.9	9.4	12.0	14.5	17.1

¹ based on spindle length 45 mm



maxon Modular System

+ Motor	Page	+ Sensor/Brake	Page	Overall length [mm] = Motor length + gearhead length + (sensor / brake) + assembly parts				
RE 6, 0.3 W, A	152			22.6	25.1	27.7	30.2	32.8
RE 6, 0.3 W, B	152			26.6	29.1	31.7	34.2	36.8
EC 6, 1.5 W	236			28.3	30.8	33.4	35.9	38.5
EC 6, 1.5 W	236	Enc 6-8 MAG	384	30.4	32.9	35.5	38.0	40.6
EC 6, 1.5 W	236	Enc 6-8 OPT	394	30.4	32.9	35.5	38.0	40.6
EC 6, 2 W	237			28.3	30.8	33.4	35.9	38.5
EC 6, 2 W	237	Enc 6-8 MAG	384	30.4	32.9	35.5	38.0	40.6
EC 6, 2 W	237	Enc 6-8 OPT	394	30.4	32.9	35.5	38.0	40.6