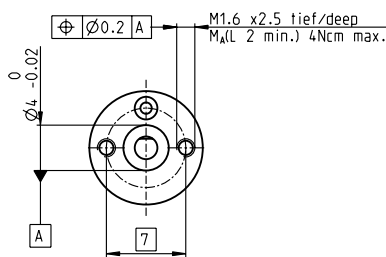
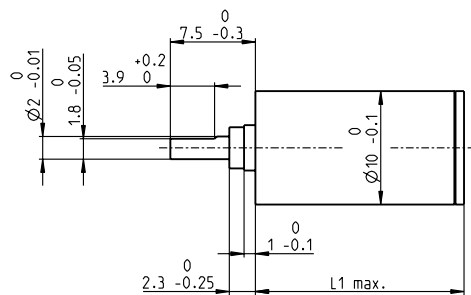


Planetary Gearhead GP 10 K $\varnothing 10$ mm, 0.005–0.1 Nm

Plastic Version



Technical Data

Planetary Gearhead	straight teeth
Housing	plastic
Output shaft	stainless steel
Bearing at output	sleeve bearing
Radial play, 5 mm from flange	max. 0.14 mm
Axial play	0.02–0.10 mm
Max. axial load (dynamic)	2 N
Max. force for press fits	10 N
Direction of rotation, drive to output	=
Max. continuous input speed	8000 rpm
Recommended temperature range	-15...+80°C
Max. radial load, 5 mm from flange	1 N

M 3:2

- Stock program
- Standard program
- Special program (on request)

Part Numbers

110308	110309	110310	110311	110312
--------	--------	--------	--------	--------

Gearhead Data

	110308	110309	110310	110311	110312
1 Reduction	4:1	16:1	64:1	256:1	1024:1
2 Absolute reduction	4	16	64	256	1024
3 Max. motor shaft diameter	mm 1.2	1.2	1.2	1.2	1.2
4 Number of stages	1	2	3	4	5
5 Max. continuous torque	Nm 0.005	0.015	0.054	0.100	0.100
6 Max. intermittent torque at gear output	Nm 0.005	0.015	0.054	0.100	0.100
7 Max. efficiency	% 90	80	70	60	55
8 Weight	g 2.1	2.5	2.8	3.2	3.6
9 Average backlash no load	° 1.8	2.0	2.2	2.5	2.8
10 Mass inertia	gcm ² 0.004	0.003	0.003	0.003	0.003
11 Gearhead length L1	mm 10.2	14.3	18.4	22.5	26.6



maxon Modular System

+ Motor	Page	+ Sensor/Brake	Page	Overall length [mm] = Motor length + gearhead length + (sensor/brake) + assembly parts				
RE 10, 0.75 W	154/155			27.3	31.4	35.5	39.6	43.7
RE 10, 0.75 W	155	MR	385/386	33.1	37.2	41.3	45.4	49.5
RE 10, 0.75 W	155	MEnc 10	408	35.4	39.5	43.6	47.7	51.8
RE 10, 1.5 W	156/157			34.9	39.0	43.1	47.2	51.3
RE 10, 1.5 W	157	MR	385/386	40.7	44.8	48.9	53.0	57.1
RE 10, 1.5 W	157	MEnc 10	408	43.0	47.1	51.2	55.3	59.4
EC 9.2 flat, 0.5 W	288			22.8	26.9	31.0	35.1	39.2
EC 10 flat, 0.2 W	289			13.6	17.7	21.8	25.9	30.0

maxon gear