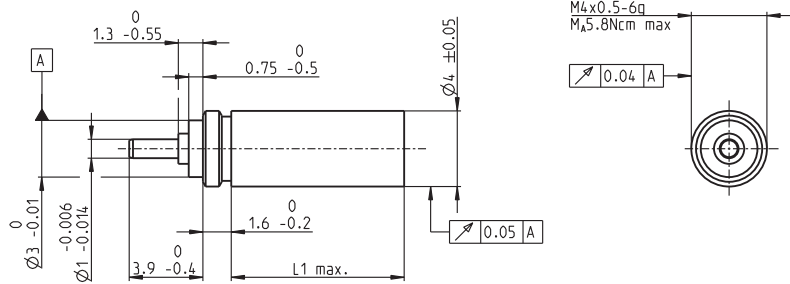


Planetary Gearhead GP 4 C $\varnothing 4$ mm, 0.002–0.015 Nm

Ceramic Version



Technical Data

Planetary Gearhead	special toothing
Output shaft	stainless steel
Bearing at output	ball bearings
Radial play, 5 mm from flange	max. 0.14 mm
Axial play	0.2 mm
Max. axial load (dynamic)	5 N
Max. force for press fits	5 N
Direction of rotation, drive to output	=
Max. continuous input speed	20000 rpm
Recommended temperature range	-15...+80°C
Number of stages	2 3 4
Max. radial load, 5 mm from flange	3 N 4 N 4 N

M 5:2

- Stock program
- Standard program
- Special program (on request)

Part Numbers

484357	484358	484359
--------	--------	--------

Gearhead Data (provisional)

	484357	484358	484359
1 Reduction	17:1	68:1	280:1
2 Absolute reduction	$\frac{2025}{121}$	$\frac{91125}{1331}$	$\frac{4100625}{14641}$
3 Max. motor shaft diameter	mm 0.6	0.6	0.6
4 Number of stages	2	3	4
5 Max. continuous torque	Nm 0.002	0.006	0.015
6 Max. intermittent torque at gear output	Nm 0.003	0.008	0.020
7 Max. efficiency	% 76	70	65
8 Weight	g 0.4	0.5	0.6
9 Average backlash no load	° 5	5	5
10 Mass inertia	gcm ² 0.0002	0.0002	0.0002
11 Gearhead length L1	mm 6.1	7.7	9.4



maxon Modular System

+ Motor	Page	+ Sensor/Brake	Page	Overall length [mm] = Motor length + gearhead length + (sensor/brake) + assembly parts
EC 4, 0.5 W, A	234			24.9 26.6 28.3
EC 4, 0.5 W, B	234			24.9 26.6 28.3
EC 4, 1.0 W, A	235			31.9 33.6 35.3
EC 4, 1.0 W, B	235			31.9 33.6 35.3